

Construction: BFC canopy shall be Type 304 stainless steel with a #4 finish where shows. All seams, joints and penetrations of the hood that directs and captures grease-laden vapors and particles of combustion shall have a liquid-tight continuous external weld in accordance with NFPA #96.

Mounting: BFC canopy shall be wall mounting type with integral connections for hanger rods. Mounting brackets shall include 3/8" nuts welded on center at the factory to allow for hanger rod connection by others.

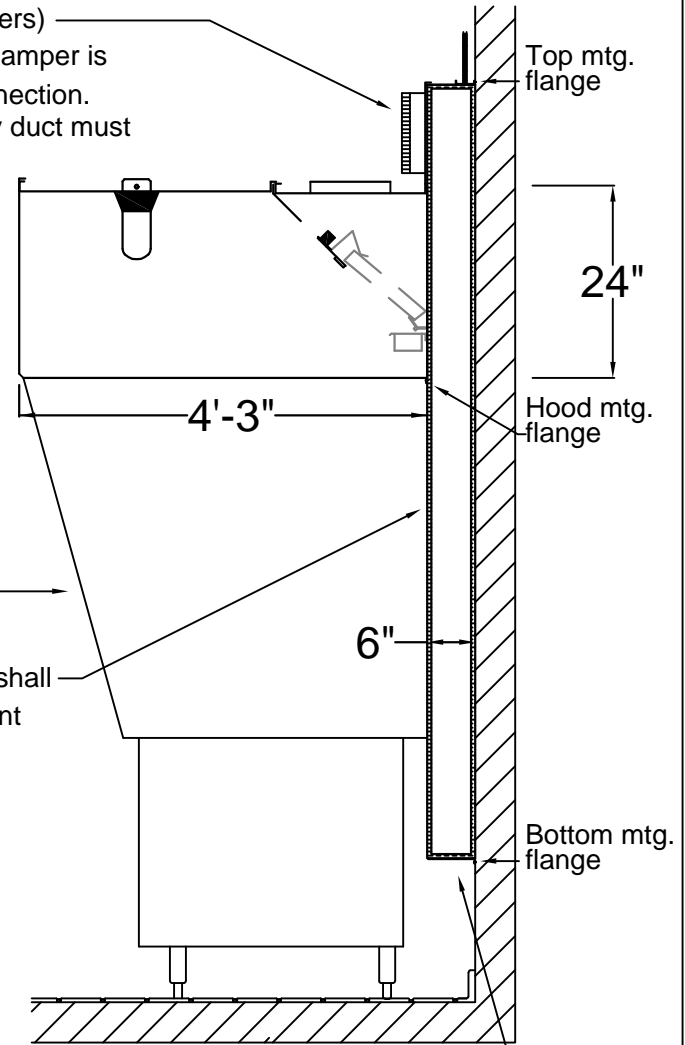
Filters: BFC canopy shall be furnished with U.L. classified baffle filters, supplied in size and quantity as required by the quantity of exhaust. The filters shall extend the full length of the hood and the filler panels shall not be more than 6" in width. The grease gutter shall be an integral part of the hood and have a minimum 1/8" per foot slope with an exposed, easily removable grease cup for cleaning. Grease cup capacity shall not exceed one U.S. gallon.

Lights: BFC canopy shall be furnished with U.L. incandescent light fixtures and globes shall be installed and pre-wired to a junction box. The light fixtures allow up to a 100 watt standard light bulb.

Listings: BFC canopy shall be UL 710 Listed and NSF Listed and built in accordance with NFPA 96. CFC canopy listed minimum exhaust rates for 400°F cooking surfaces is 185 CFM/ft and for 600°F cooking surfaces is 243 CFM/ft.

Supply Collar (by others)
A field provided fire damper is required at each connection.
Field provided supply duct must be insulated.

Side Curtain (typ.)
Rear supply plenum shall be insulated to prevent condensation.



Rear Supply Plenum Perforated Diffuser @18" A.F.F.

BUILT IN ACCORDANCE WITH NFPA #96

PREMIUM AIR SYSTEMS
1051 NAUGHTON, TROY, MI 48083
TEL: (248) 680-8800 FAX: (248) 680-8808
KENTUCKY FABRICATION PLANT
TEL: (270) 864-5785 FAX: (270) 864-9265
www.premiumair.net

JOB NAME:

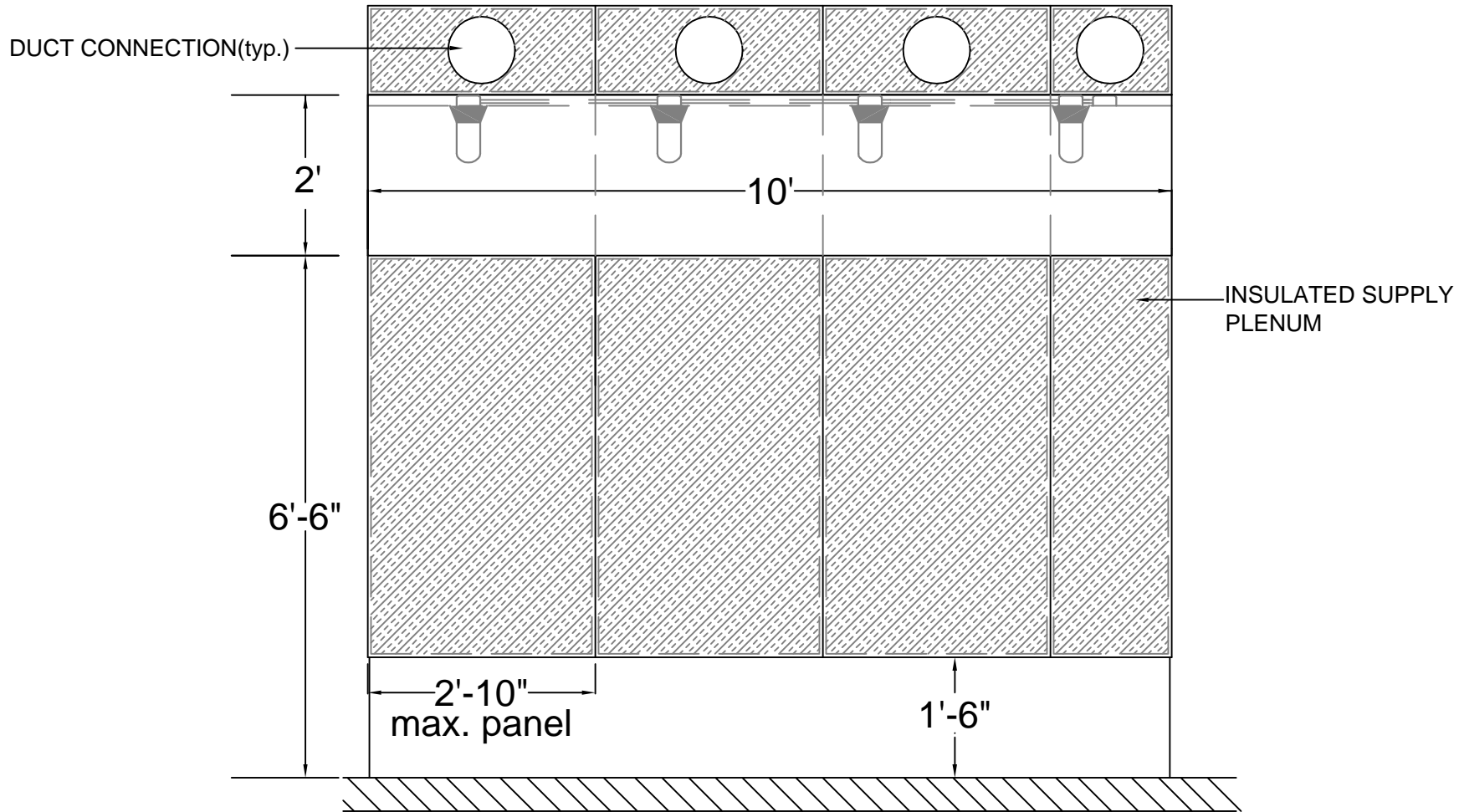
ADDRESS:

**BFC SERIES
REAR PLENUM
SUPPLY AIR CANOPY
57" DEEP
U.L. LISTED
CANOPY HOOD**



LISTED
EXHAUST HOODS WITHOUT
EXHAUST DAMPERS
8R16

DRAWING DATE: 03/03/03
DRAWN BY: KAC
DRAWING SCALE: 1/2" = 1'



BUILT IN ACCORDANCE WITH NFPA #96

End Curtains (recommended)

- Right
- Left
- None

Insulated Side Spacer

- Right
- Left
- Ohio Location

Stainless Steel Wall Panel

- Yes No
- Quilted Pattern

Enclosure

- Yes No



PREMIUM AIR SYSTEMS
 1051 NAUGHTON, TROY, MI 48083
 TEL: (248) 680-8800 FAX: (248) 680-8808
 KENTUCKY FABRICATION PLANT
 TEL: (270) 864-5785 FAX: (270) 864-9265

www.premiumair.net

JOB NAME:

ADDRESS:

**BFC SERIES
 REAR PLENUM
 SUPPLY AIR CANOPY
 57" DEEP
 U.L. LISTED
 CANOPY HOOD**



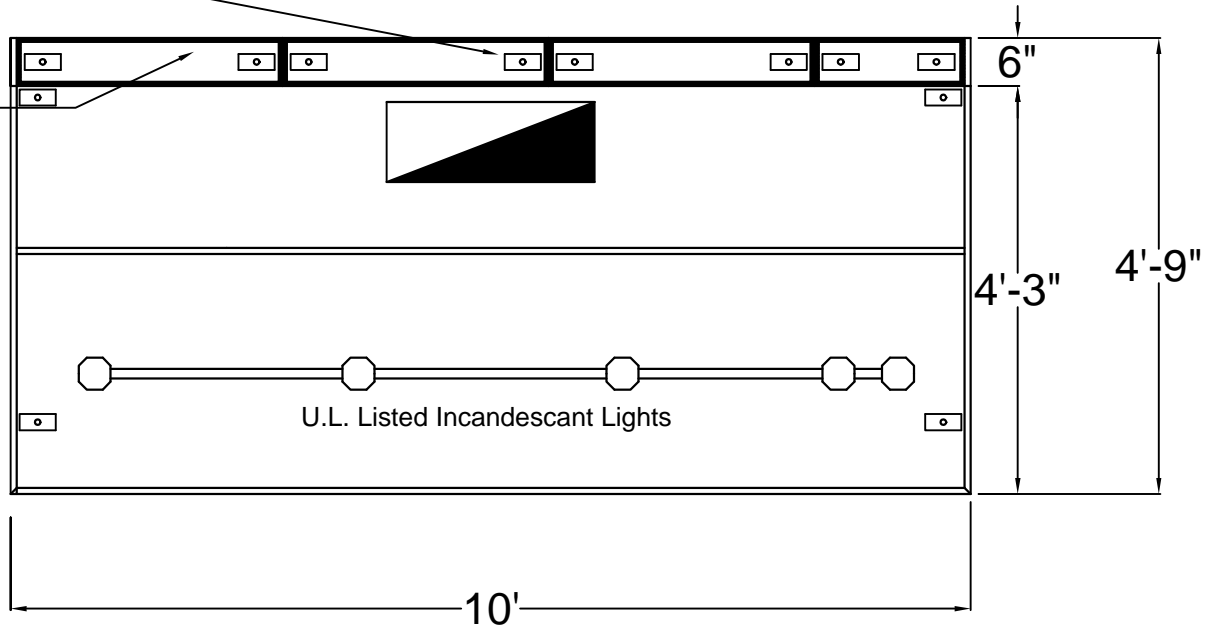
LISTED
 EXHAUST HOODS WITHOUT
 EXHAUST DAMPERS
 8R16

DRAWING DATE: 03/03/03
 DRAWN BY: KAC
 DRAWING SCALE: 1/2" = 1'

**Plan View with 6" rear supply air plenum
Collar placements for display only**

3/8" Threaded rod brackets(typ.)

Insulated rear supply plenum
34" max. left to right panels



BUILT IN ACCORDANCE WITH NFPA #96



PREMIUM AIR SYSTEMS
1051 NAUGHTON, TROY, MI 48083
TEL: (248) 680-8800 FAX: (248) 680-8808
KENTUCKY FABRICATION PLANT
TEL: (270) 864-5785 FAX: (270) 864-9265

www.premiumair.net

JOB NAME:

ADDRESS:

**BFC SERIES
REAR PLENUM
SUPPLY AIR CANOPY
57" DEEP
U.L. LISTED
CANOPY HOOD**



LISTED
EXHAUST HOODS WITHOUT
EXHAUST DAMPERS
8R16

DRAWING DATE: 03/03/03
DRAWN BY: KAC
DRAWING SCALE: 1/2" = 1'